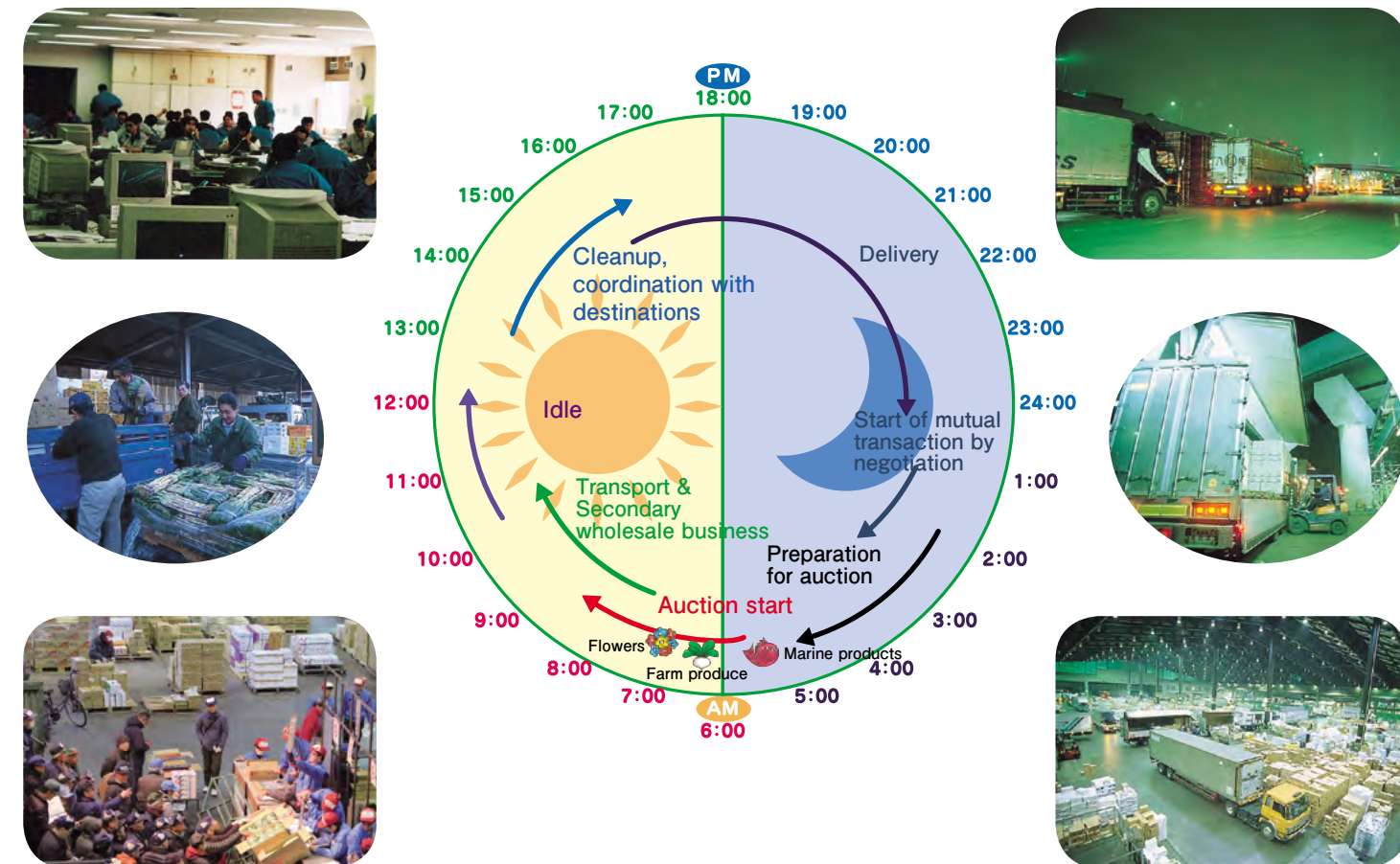


Ota Market's 24 hour Time Table



Ota Market



Surrounding Area



How to get there

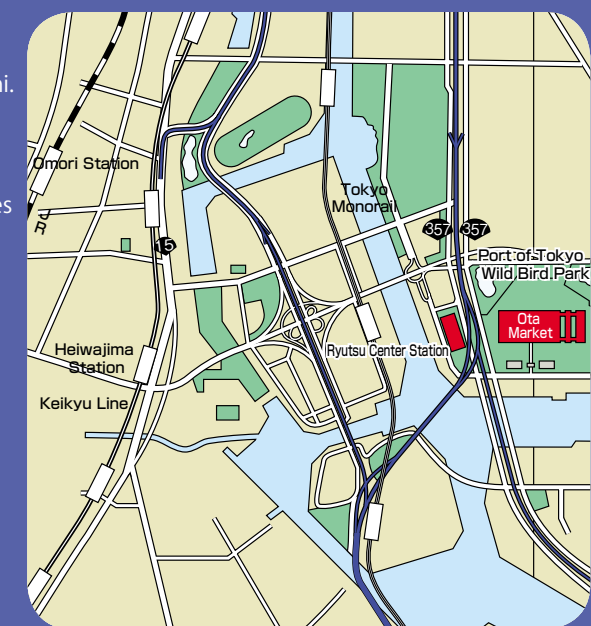
- Take Keikyū bus from east exit of JR Omori Station. (Approx. 20min)
- Take Keikyū bus from east exit of JR Omori Station. Get off at Keihin Ohashi. (1 minute on foot from there)
- Take Toei bus from east exit (Konan exit) of JR Shinagawa Station. (Approx. 30min)
- Take Tokyo monorail and get off Ryutsu Center Station. (Approx. 20 minutes on foot from there)
- Take Keikyū bus from Keikyū Heiwajima Station. (Approx. 10min)

For inquiries

Ota Market, Tokyo Metropolitan Government Central Wholesale Market
3-2-1 Tokai, Ota-ku, Tokyo 143-0001

Offices in the Tokyo area

Administration TEL (03)3790-8301 FAX (03)3790-6541
Operations TEL (03)3790-6520 FAX (03)3790-6541
Flower office TEL (03)3799-6530 FAX (03)3799-6541





1 General Information

Ota Market was built as a general market for farm produce (fruit & vegetables), marine products and flowers in 1981 under the 3rd Wholesale Market Construction Plan of Tokyo Prefecture. It integrated the farm produce markets from Kanda, Ebara and Kamata, and absorbed the marine products market from Omori, to become a regional wholesale market. The flower market integrated 9 privately operated markets in the Jonan area.

The daily planned handling for farm produce is 3,000 tons, for marine products 300 tons and flowers 2.451 million when converted into cut stalks. The farm produce and flower markets are amongst the largest in Japan in terms of facility scale and handling volume, and are ranked among the marine products market in Tsukiji Market in importance as a prime market of Japan with a supply area that covers all of eastern Japan.

Many shipping organizations have offices on the premises, which makes distribution information readily available. For visitors, there is display room and specially marked course that make the market a familiar part of metropolitan Tokyo.

2 Site Information

Address : 3-2-1 Tokai, Ota-ku, Tokyo (Flower Market:2-2-1 Tokai)
Area : 386,426 m²
Farm produce & Marine Products Markets : 346,321 m²
Flower Market : 40,105 m²
Other facilities : 38,000 m²

3 History

Farm Produce & Marine Products Markets
1983 : Basic design and ground surveys
1985 : Building design and ground improvement
1986 : Construction started
1988 : Construction completed
1989 : Operations started
(Farm Produce Market: May 6, Marine Products Market: Sept. 18)

Flower Market
1987 : Basic design and building design
1988 : Construction started
1989 : Construction completed
Sept.8, 1990 : Operations started

4 Cost

	Total	Farm Produce/Marine Products Markets	Flower Market
Construction	¥ 61.2 billion	¥ 55.3 billion	¥ 5.9 billion
Land	¥ 66.6 billion	¥ 53.2 billion	¥ 13.4 billion
Total	¥ 127.8 billion	108.5 billion	19.3 billion

5 Operators on the Premises (As of January 1, 2019)

	Farm Produce Market	Marine Products Market	Flower Market
Primary wholesalers	4 companies	1 company	2 companies
Secondary wholesalers	166 companies (301 shops)	41 companies (90 shops)	18 companies (20 shops)
Retailers	1,169 people	17 people (Foragers: Approx.300)	1,526 people
Related operators	74 companies		8 companies

6 Management···Full-time 30 (As of April 1, 2018)

Senior Director, Ota Market 1				
Director, Market Management Section 1	General Affairs	4	Director, Trading Guidance Section 1	Farm Produce Guidance 5
	Facility Management	4		Marine Products Guidance 3
	Equipment	2		Flowers Guidance 3
	Buildings	2		
	Electrician	4		

7 Facilities (As of January 1, 2019)

Building	Extended floor space	Description	
Farm Produce Bldg.	94,900	1st floor:	Primary wholesale market; 45,000 m ² Secondary wholesale market; 26,000 m ² (@ approx. 32 m ²)
		2nd floor:	Tokyo gov't office (North end), buyers cooperative office, roof parking
Marine Produce Bldg.	24,900	1st floor:	Primary wholesale market; 5,400 m ² Secondary wholesale market; 6,500 m ² (@ approx. 28 m ²)
		2nd floor:	Purchased goods storage; 5,000 m ² Tokyo gov't office, meeting rooms, wholesale companies, secondary wholesalers cooperative office, buyers cooperative office, roof parking, etc.
Annex	10,400	1st floor:	Other products market, restaurants × 77 (@ approx. 47-80 m ²) , roof parking
Administration Bldg.	42,400	Basement:	Machine room,etc.
		1st floor:	Secondray wholesalers cooperative office, post office, bank, etc.
		2nd floor:	Large hall, small to midsize meeting rooms, display room (w/ video system), restaurants, infirmary, Market Association, etc.
		3rd-8th floors:	Offices of wholesalers, shippers, etc.
		9th floor:	Tokyo gov't office, large meeting room, market sanitation room, Ministry of Agriculture, Forestry and Fisheries office
Parking Garage	26,400	Capacity:	Approx. 1,000 vehicles
Farm Produce Cold Storage Bldg.	5,800	1st floor:	Banana fermentation room (30)
		2nd-4th floors:	Refrigerated rooms (6,Holding capacity:4,500 ton)
Marine Products Cold Storage Bldg.	3,900	1st-3rd floors:	Refrigerated rooms (6,0-50°C)
		4th floor:	Machine room (Holding capacity:3,000 ton)
Unloading Space	9,200	Unloading space:	8,600 m ² , Office space: 600 m ²
Packaging and Unloading Bldg.	13,400	1st floor:	Unloading space, Refrigerator
		2nd-3rd floors:	Packaging Space, Refrigerated warehouse
Loading Space	28,000	Loading space:	28,000m ²
Marine Products Shipping Bldg.	1,600 (Opened in Dec.1996)	1st floor:	Cold storage Unloading space:529 m ² , Platform: × 2
		2nd floor:	Office space: 378 m ²
Flower Bldg.	22,000	Basement:	Temperature-controlled warehouse... 4,000 m ² (2,000 m ² × 2 wholesalers)
		1st floor:	Primary wholesale market... 7,400 m ² Secondary wholesale market... 1,200 m ² (@ approx.63 m ²) Auto transport system... 1,903 m ² (Opened on December, 1999) Storage facility of FAJ products... 8,128 m ² (Opened on August, 2003)
		2nd floor:	Tokyo gov't office, meeting rooms, offices for wholesalers, buyers cooperative office, restaurants... 1,440 m ²

※ Other: The fruits & vegetables section has a cold loading dock
Administration Bldg has a west loading dock
The flower section has a products storage , a parking lot the northern storehouse and Temperature-controlled Unloading space ,
Ota Market Kaikan is closed

Farm Produce



Primary wholesale market symbol



Primary wholesale market symbol



Secondary wholesale market symbol

Marine Products



Primary wholesale market symbol



Secondary wholesale market



Auction

① Handling Volume & Monetary Value (Market open for 259 days)

	Vegetables	Fruits	Others	Total	(Daily)
Volume handled	744,904	215,924	9,583	970,412	3,747
Amount handled	194,485	105,286	2,533	302,305	1,167

② Auction Opening Time

06:50

③ Share

Of 9 Tokyo Prefectural Central Wholesale Markets: 52.1% (2018)
Of 49 central wholesale markets across Japan: 14.8% (fiscal year 2016)

④ Operators (As of January 1, 2019)

Primary wholesalers: 4 companies
(Tokyo Seika, Tokyo Ebara Seika, Tokyo Kanda Seika, Tokyo Toume Shokuhin)
Secondary wholesalers: 166 companies, 301 shops
Retailers: 1,169 people



Secondary wholesale market



Auction

① Handling Volume & Monetary Value (Market open for 260 days)

	Fresh Fish	Live Fish	Frozen	Fish Others	Total	(Daily)
Volume handled	2,241	1,546	682	3,078	7,547	29
Amount handled	4,046	2,118	1,074	2,296	9,534	37

② Auction Opening Time

05:40

③ Share

Of 3 Tokyo Prefectural Central Wholesale Markets: 2.2% (2018)
Of 34 central wholesale markets across Japan: 0.5% (fiscal year 2016)

④ Operators (As of January 1, 2019)

Primary wholesalers: 1 company
(Daito Gyorui [Ota Branch])
Secondary wholesalers: 41 companies, 90 shops
Retailers: 17 people (Foragers: Approx. 300)

Flowers



Flower Bldg. symbol



Auto transport system



Secondary wholesale market

Related Operators, etc.



Farm produce and marine products retail market



Flower retail market



Bank (1st floor, Adm. Bldg.)

① Handling Volume & Monetary Value (Market open for 309 days)

	Cut flowers	Potted plants	Others	Total	(Daily)
Volume handled	507,059	13,413	49,722	808,881	2,618
Amount handled	33,164	8,065	7,905	49,133	159

② Auction Opening Time

07:00

③ Share

Of 5 Tokyo Prefectural Central Wholesale Markets: 58.5% (2018)
Of 14 central wholesale markets across Japan: 42.4% (fiscal year 2016)

④ Operators (As of January 1, 2019)

Primary wholesalers: 2 companies (Ota Kaki, Flower Auction Japan [FAJ])
Secondary wholesalers: 18 companies, 20 shops
Retailers: 1,526 people

Restaurants
(2nd floor,
Adm. Bldg.)



Restaurants (2nd floor, Adm. Bldg.)



Auction



Post office (1st floor, Adm. Bldg.)

	Operation type	No.of Operation	Annex	Adminis-t ration Bldg.	Flower Bldg.	Unloading Bldg.	Farm Produce Bldg.	Marine Products Bldg.	Other
Related Operators	Transportation	8		4		4			
	Selling various materials/ Eathing place	69	55	4	8			1	1
	Service industries	5	1	3					1
	Total	82	56	11	8	4		1	2

※Other facilities: Post office, clinic (1 each in Adm. Bldg.)

Visitor's Map



Flower wholesale market



Farm produce wholesale market



Farm produce secondary wholesale market



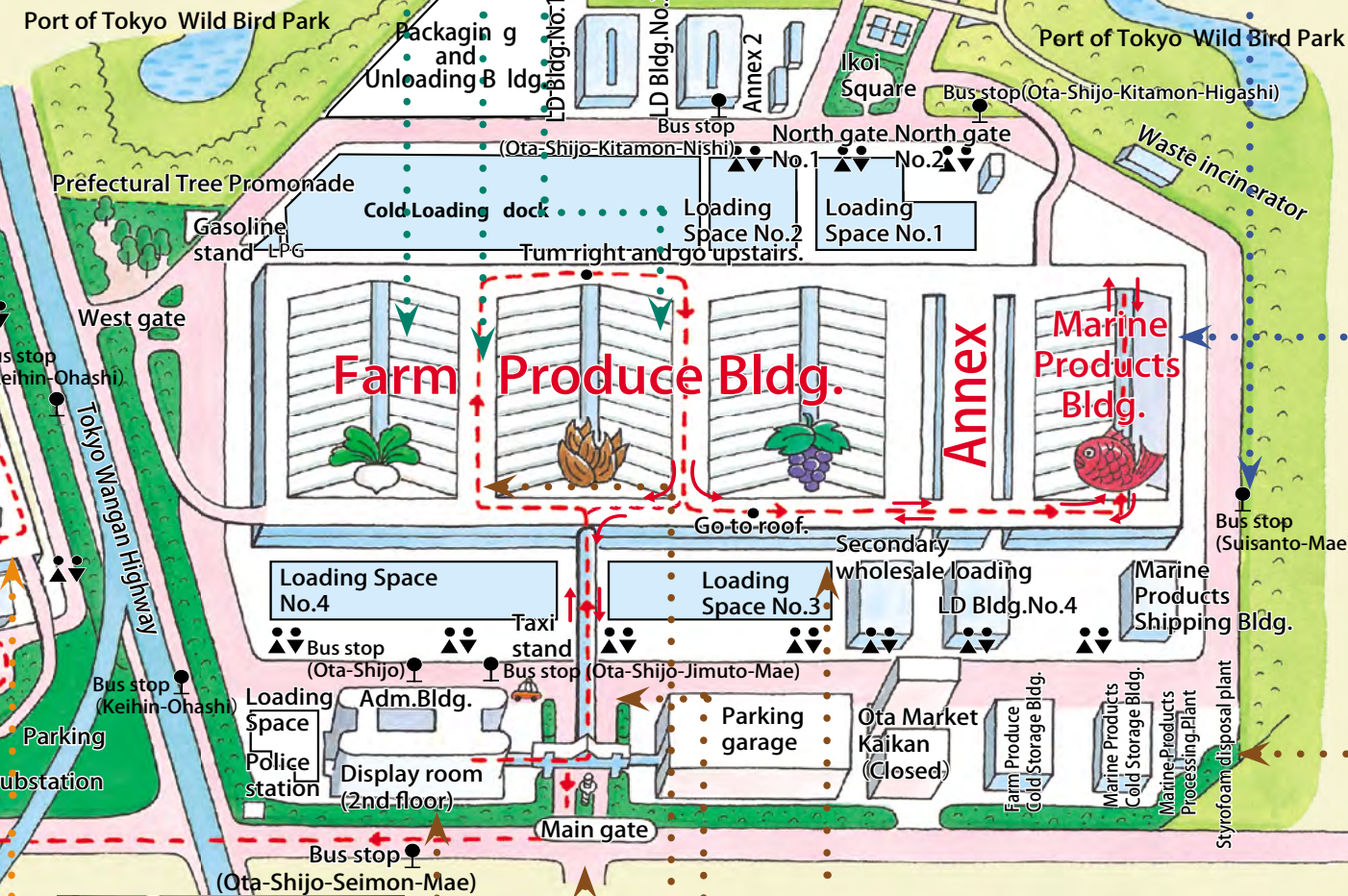
Bus stop



Live catch wholesale market

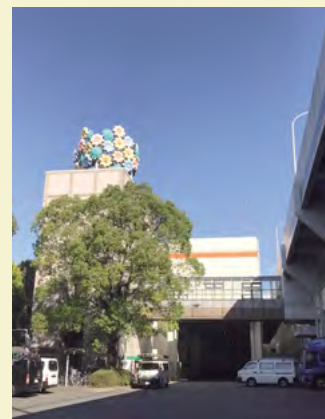


Visitor information board



Auto transport system

Secondary wholesale shops seen from visitor's course



Flower market entrance

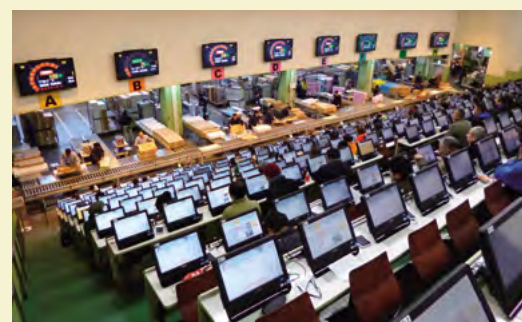
Display corner



Visitor's course



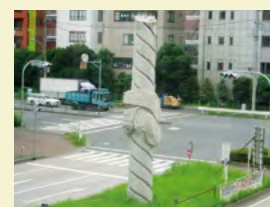
Flower auction



AV room



Display room



"Linking Earth and Sky" Monument (By Kenji Misawa)



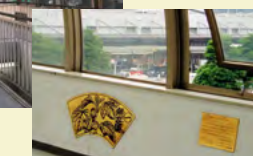
Rooftop Visitor's course



Visitor's course



Visitor's bridge



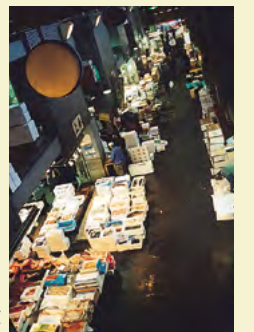
Counting song for vegetables



Styrofoam disposal plant



Primary wholesale market



Secondary wholesale market