



For a Sustainable Urban Water Cycle

Yuriko Koike
Governor of Tokyo



Dialogue with the world's leaders

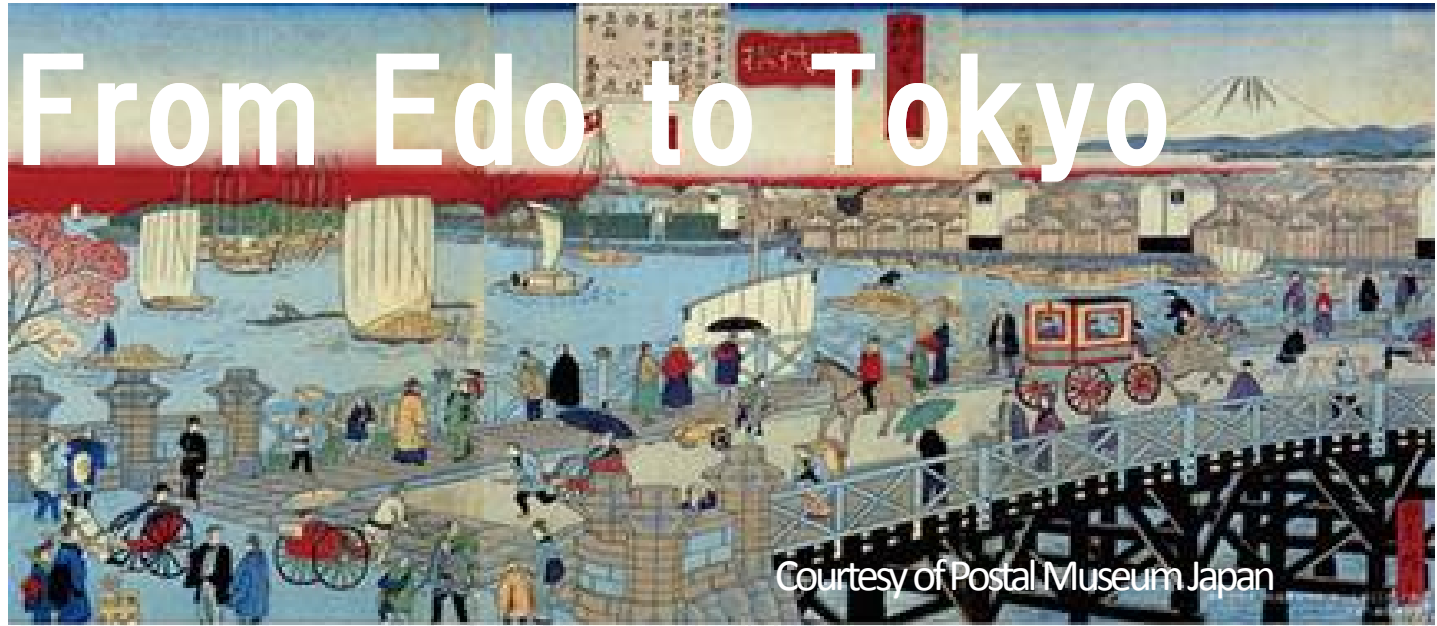
©C40/S.Bastin

TOKYO FORUM FOR CLEAN CITY & CLEAR SKY



Share policies and know-how

From Edo to Tokyo



Courtesy of Postal Museum Japan

Old meets New
Tokyo 150

Water supports the city



Densely populated megalopolis Tokyo



A satellite map of the Tokyo region. The landmass of Tokyo is outlined in white. The surrounding water body, Tokyo Bay, is also outlined in white. The text 'Tokyo' is centered over the landmass, and 'Tokyo Bay' is centered over the bay. A white line points from the text 'Tokyo Bay' to the bay area.

Tokyo

Tokyo Bay

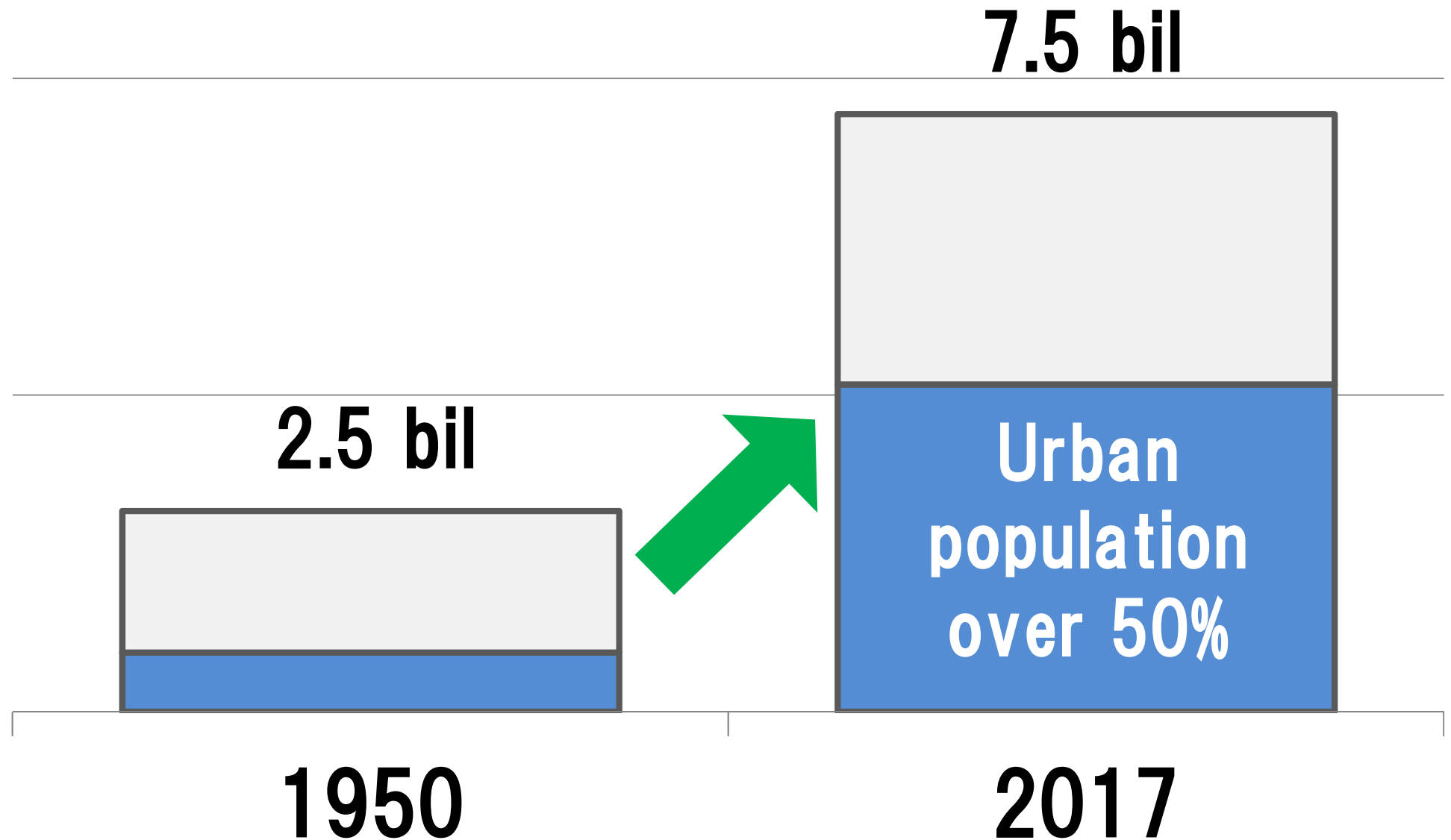
Tokyo has various water restrictions

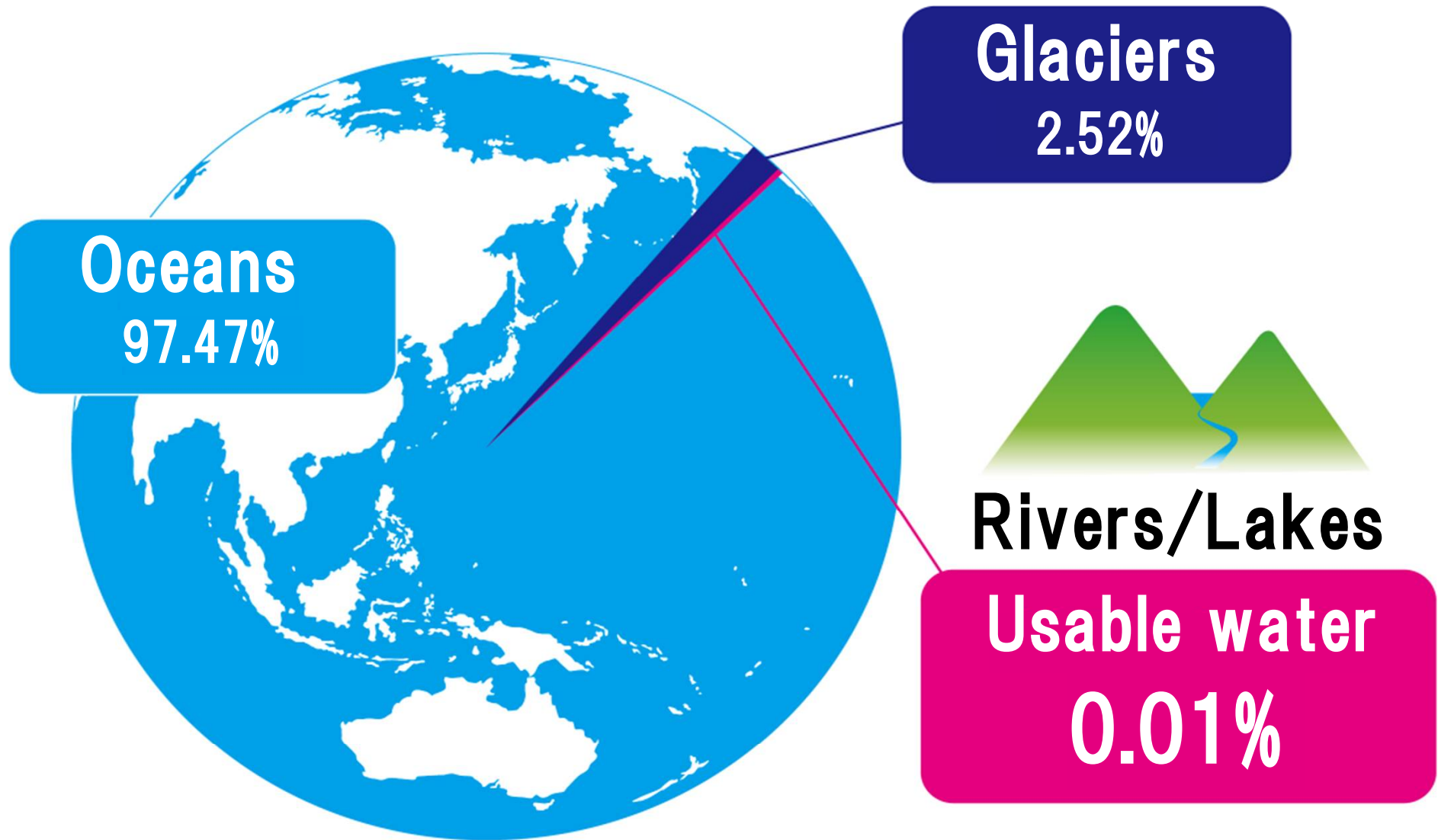
Prepared using Geospatial Information Authority of Japan (GSI) tile (Japan Landsat mosaic imagery)
Data sources: Landsat8 images (GSI, TSIC, GEO Grid/AIST), Landsat8 images (U.S. Geological Survey),
Bathymetric charts (GEBCO)



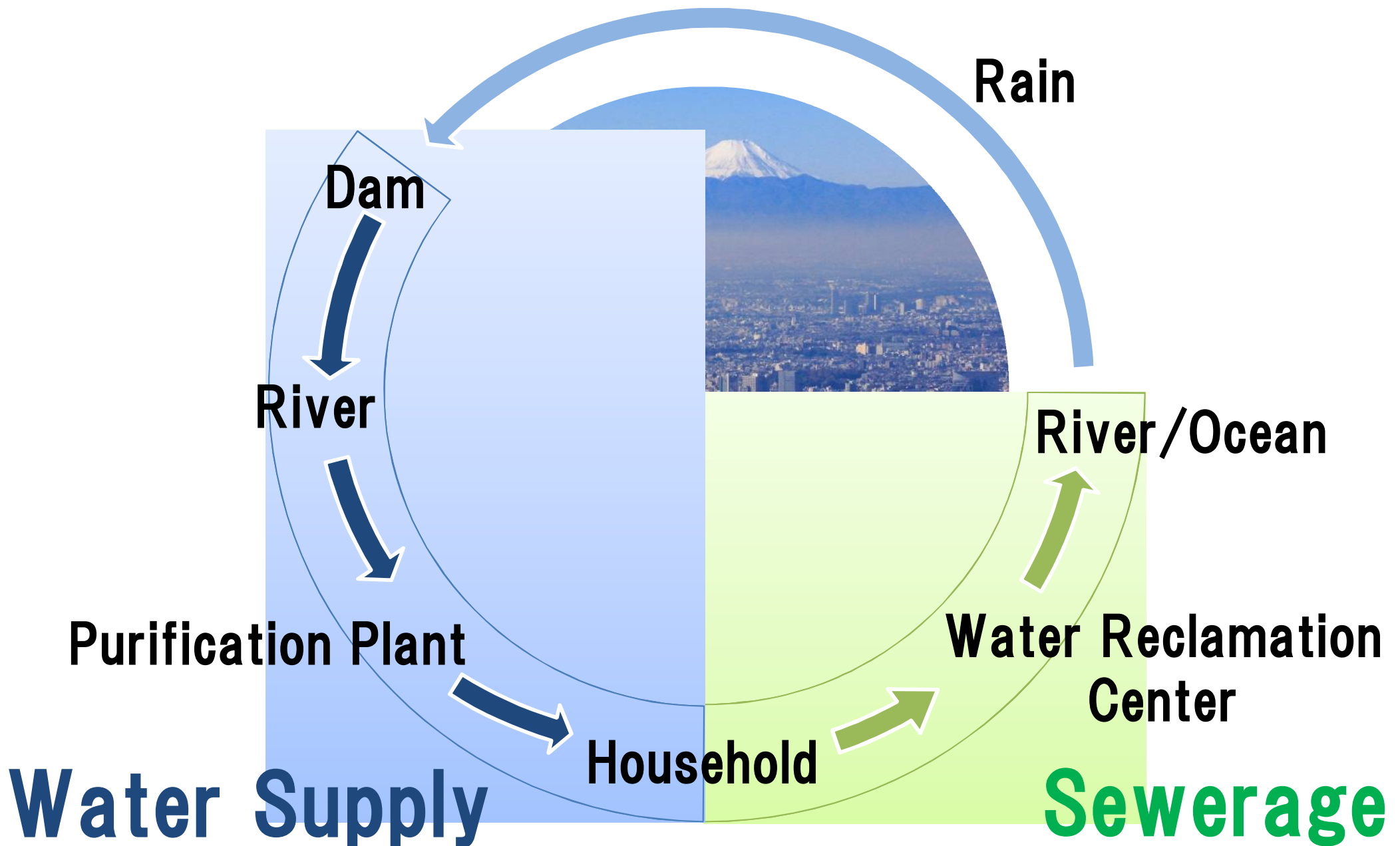
Water is Tokyo's pride

Global population increase and urbanization





Urban water cycle



Environment-related Risk Flooding



2018 Heavy Rain in West Japan

Cooperating to find solutions to environmental challenges



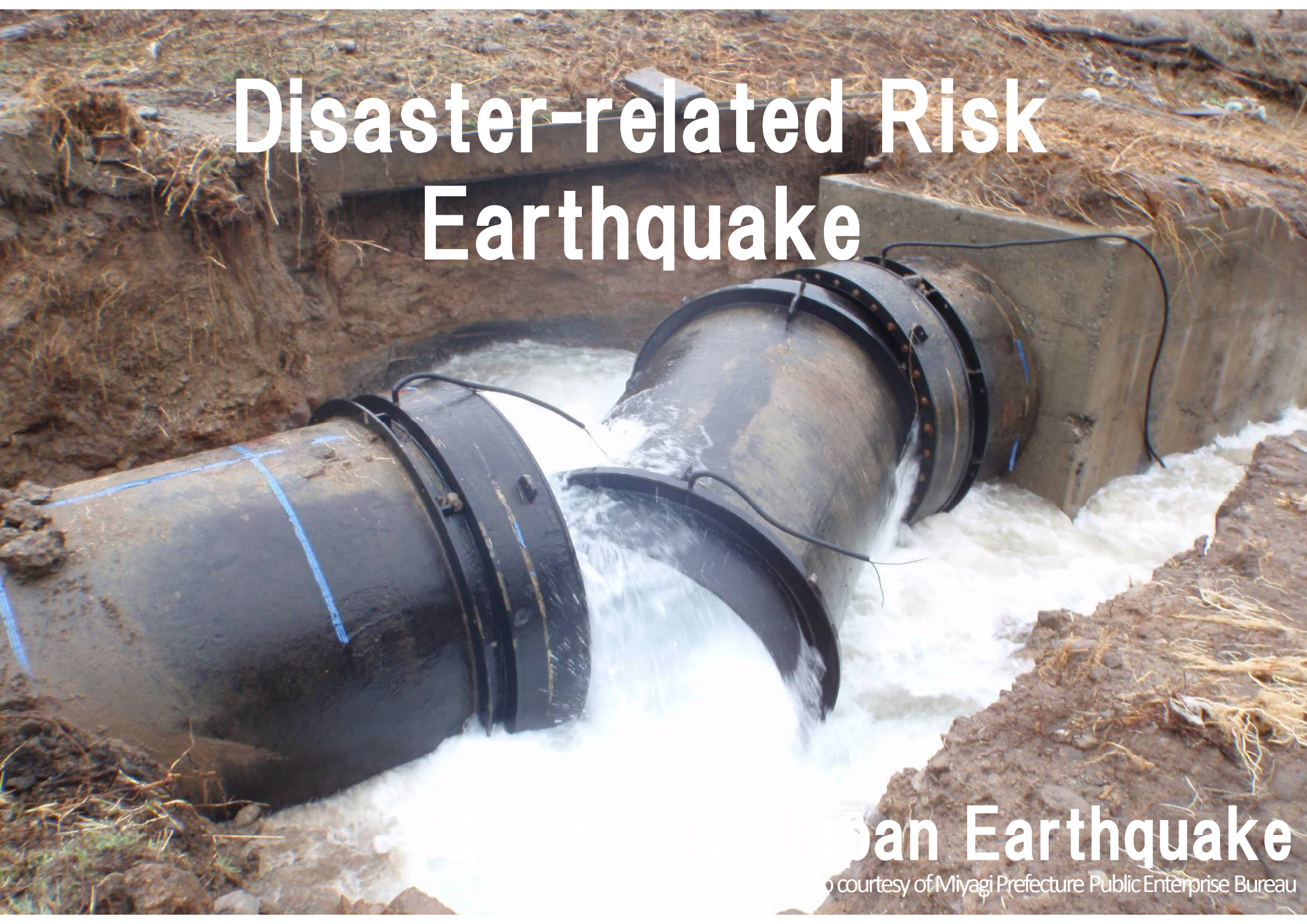
Disaster-related Risk Earthquake

Great Hanshin-Awaji Earthquake

Photo courtesy of Kobe City



Disaster-related Risk Earthquake



Japan Earthquake
courtesy of Miyagi Prefecture Public Enterprise Bureau

Disaster-related Risk Earthquake

Liquefaction after
the Great East Japan Earthquake



A large, white, calligraphic Japanese character '心' (Kokoro) is centered in the left portion of the image. The background is a dimly lit room with wooden walls and floors, and shoji screens that are softly illuminated from within, creating a warm, golden glow.

Mind

A large, white, calligraphic Japanese character '技' (Waza) is centered in the middle portion of the image. The background is a dimly lit room with wooden walls and floors, and shoji screens that are softly illuminated from within, creating a warm, golden glow.

Skill

A large, white, calligraphic Japanese character '体' (Tai) is centered in the right portion of the image. The background is a dimly lit room with wooden walls and floors, and shoji screens that are softly illuminated from within, creating a warm, golden glow.

Body

☒ Reuse

☒ Reduce

☒ Recycle



'MOTTAINAI'



“People” and



“Awareness”



Leak Detection

Advanced Technologies and Skills

“ 3% ”

- Effective use of water resources**
- Reduce CO2 emissions**

Advanced Technologies and Skills

Sewage Pipe Renewal method



A control room with two operators in blue uniforms sitting at a desk with multiple computer monitors. A large wall display in the background shows a complex network diagram with various nodes and connections, some highlighted in red and green. The text 'Robust Systems' is overlaid in large white font.

Robust Systems

Infrastructure Management

Three Cities to Create a New Tokyo



FIRST

TOKYO

FUTURE

Safe City

Diversity
Diverse City

Smart City



Smart City Initiatives

Water Supply and Sewerage System

For a Smart Water System



Olympic and
Paralympic
Legacy

Smart Meter

2022

Trial Project
Smart Meter
+
Smart Grid

2025

SMART
WATER
SYSTEM

RESILIENCE & SUSTAINABILITY



Contributing to the World

Tokyo Tokyo Old meets New