

# Tokyo Basics

## POPULATION

Total Population of Tokyo (2025)

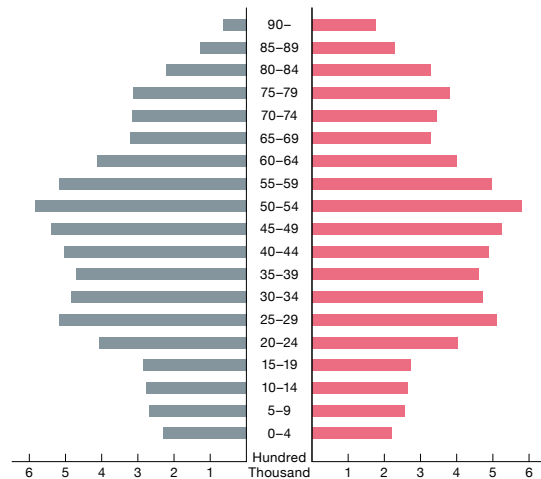
14,273,066

Population Age Structure by Gender (2025)

Men (2025)  
6,999,402

Average Life Expectancy (2020)  
81.77

Foreign Residents (2025)  
772,418

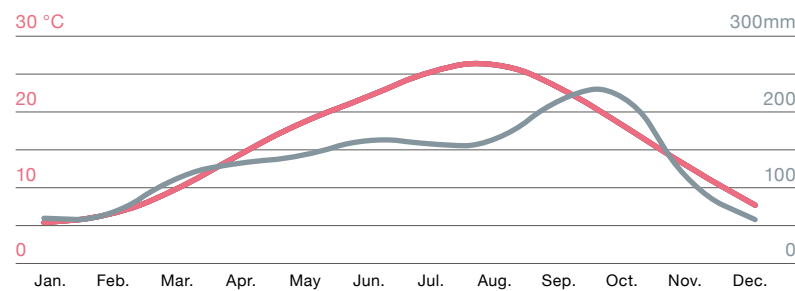


Women (2025)  
7,273,664

Average Life Expectancy (2020)  
87.86

People Over 100 Years Old (2025)  
7,633

## AVERAGE MONTHLY TEMPERATURE AND RAINFALL



Source: Japan Meteorological Agency, 1991–2020    ● = Average temperature    ● = Average rainfall

Average Annual Temperature

15.8°C  
(60.4 °F)



Average Annual Rainfall

1,598.2 mm

## TOKYO'S GMP<sup>1</sup> (Nominal) as a Share of Japan's GDP (FY2022)

Japan ¥566.5 trillion

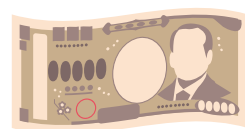


21.2% of Japan's GDP

1. GMP: Gross Metropolitan Product    2. US\$889 billion  
2022 annual average conversion rate ¥1 = US\$0.0074

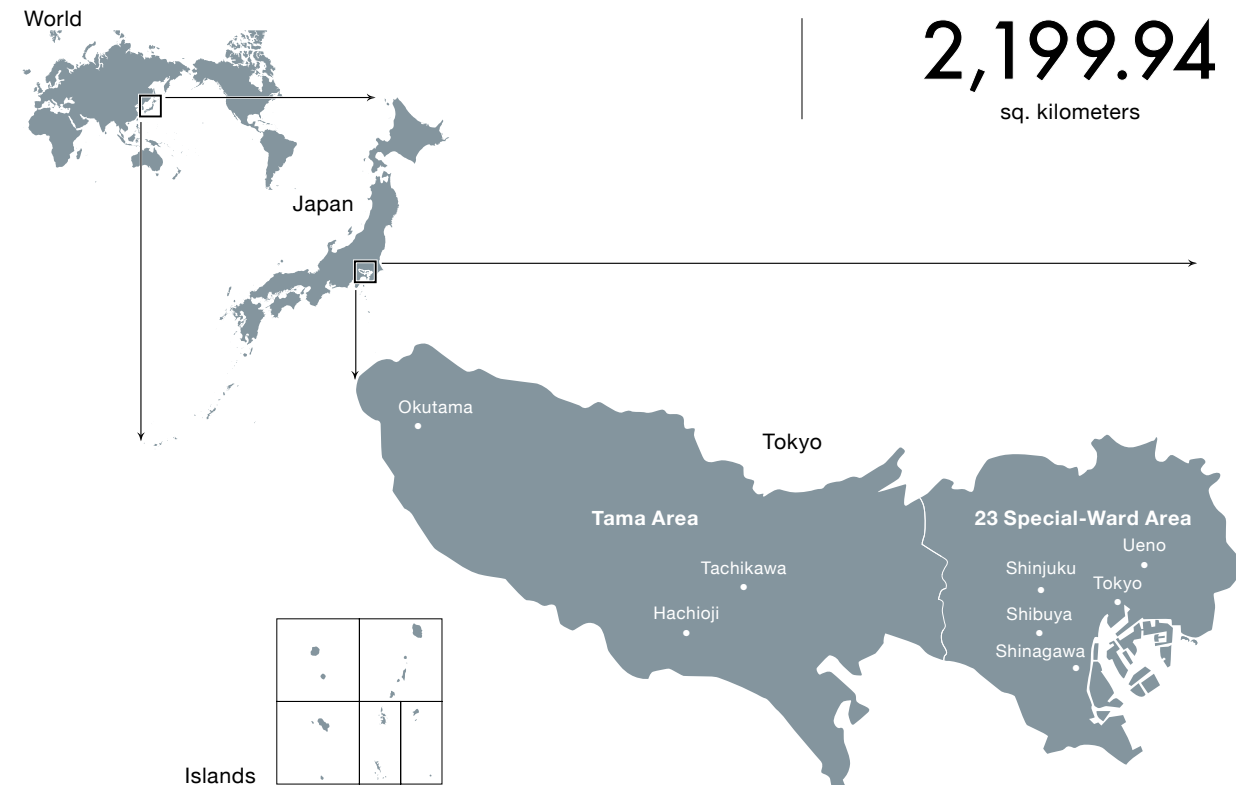
## TOKYO'S BUDGET (Initial FY2025)

¥17,850 billion\*



\* US\$116 billion  
¥1 = US\$0.0065 (Bloomberg, October 31, 2025)

## LOCATION

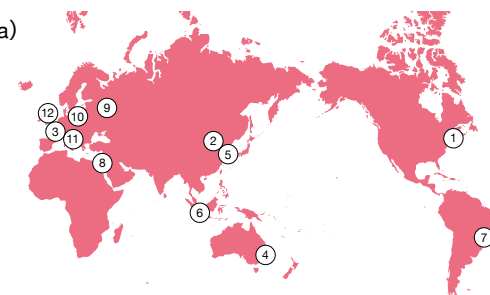


## AREA

2,199.94  
sq. kilometers

## SISTER AND FRIENDSHIP CITIES / STATES\*

- 1 New York (USA)
- 2 Beijing (China)
- 3 Paris (France)
- 4 New South Wales\* (Australia)
- 5 Seoul (South Korea)
- 6 Jakarta (Indonesia)
- 7 São Paulo\* (Brazil)
- 8 Cairo (Egypt)
- 9 Moscow (Russia)
- 10 Berlin (Germany)
- 11 Rome (Italy)
- 12 London (UK)



## ANNUAL FOREIGN TOURISTS (2024)



24.79  
million

A 26.9% increase over 2023

## SYMBOLS



The *somei yoshino* cherry tree was developed in the late Edo period to early Meiji era (late 1800s) by crossbreeding wild cherry trees. The light-pink blossoms in full bloom and falling petals scattering in the wind are a magnificent sight to behold.



Ginkgo biloba is a deciduous tree with distinctive fan-shaped leaves that change from light green to bright yellow in autumn. The ginkgo tree is commonly found along Tokyo's streets and avenues and is highly resistant to pollution and fire.



The *yurikamome* gull has a vermillion bill and legs. It comes south to Tokyo in late October every year and sojourns at the surrounding ports and rivers until the following April. A favorite theme of poets and painters, it is also called *miyakodori* (bird of the capital).